



Interreg - IPA CBC

Greece - Albania

nZCom



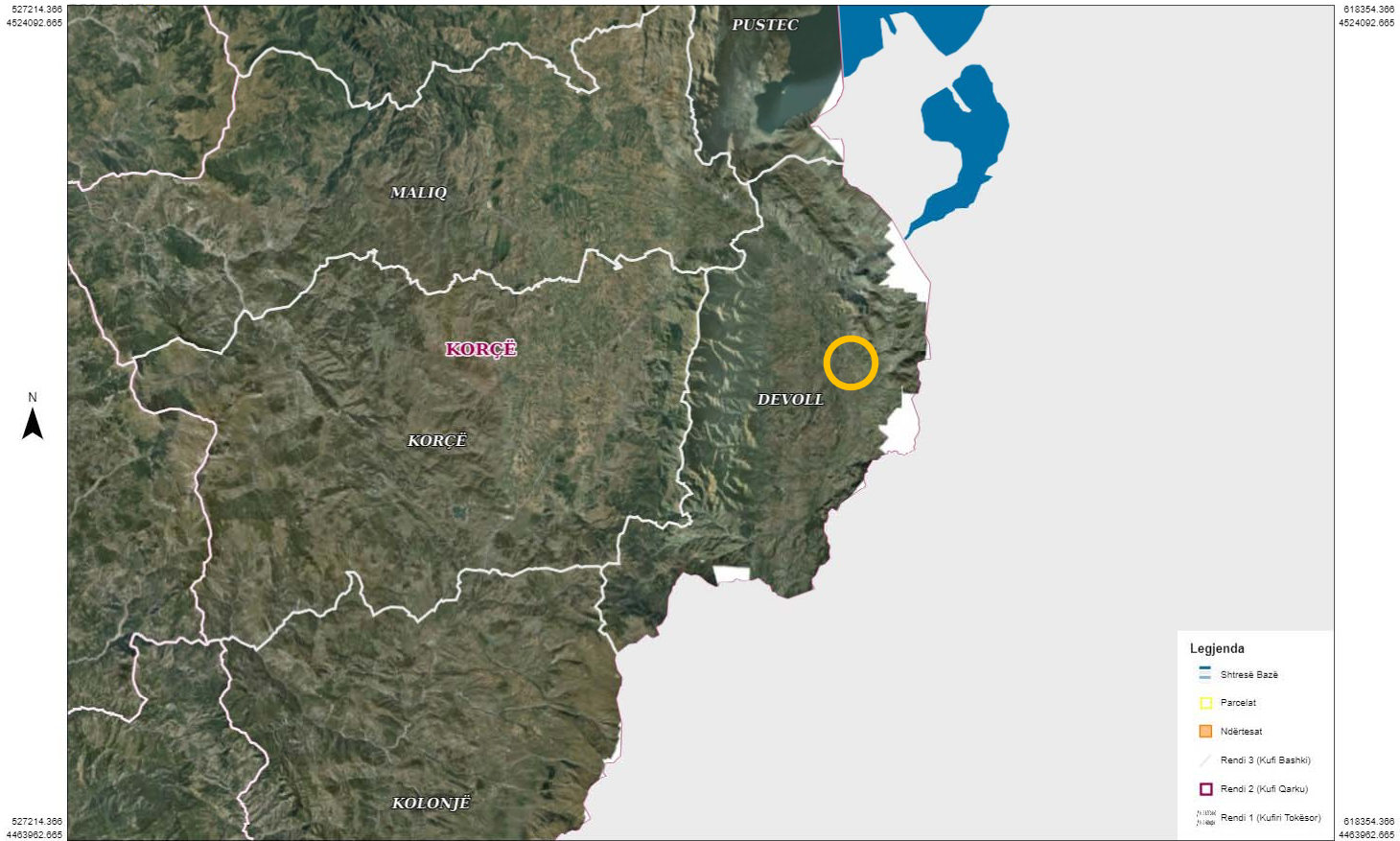
“Sustainable and almost zero - emission
communities and the role of public buildings”



Ky projekt realizohet permes Programeve te Bashkepunimit
Nderkufitar IPA Interreg Greece-Albania 2014-2020.

This project is implemented through the Cross - Border Cooperation
Programme IPA Interreg Greece-Albania 2014-2020

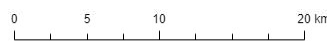
Interreg - IPA CBC Greece - Albania nZCom



527214.386
4463892.665

618354.386
4463892.665

<https://geoportal.asig.gov.al> ofron të dhëna gjeohapësimore të ofruara nga autoritetet publike përgjegjëse.
Përgjegjësia për saktësinë e të dhënave është e autoritetit publik që i ka krijuar ato.



Legjenda

- Shtresë Bazë
- Parcelat
- Ndërtësat
- Rendi 3 (Kufi Bashki)
- Rendi 2 (Kufi Qarku)
- Rendi 1 (Kufiri Tokësor)

Sistemi koordinativ: KRGJSH
Projektimi: KRGJSH



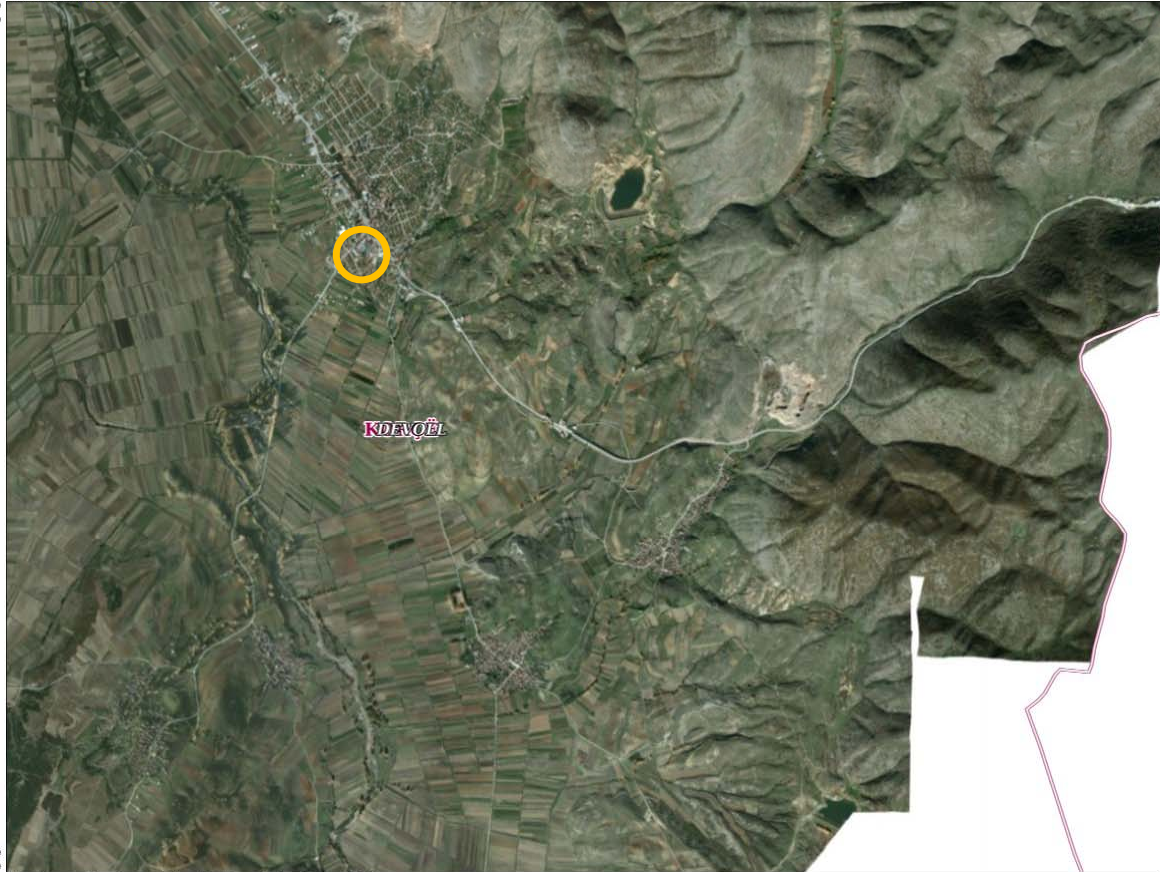
Interreg - IPA CBC

Greece - Albania

nZCom



580995.859
4500647.339



590109.859
4500647.339

Legjenda

- Shtresë Bazë
- Parcelat
- Ndërtesat
- Rendi 3 (Kufi Bashki)
- Rendi 2 (Kufi Qarku)
- Rendi 1 (Kufiri Tokësor)

Sistemi koordinativ: KRGJSH
Projektimi: KRGJSH

580995.859
4494834.339

<https://geoportal.asig.gov.al> ofron të dhëna gjeohapësinore të ofruara nga autoritetet publike përgjegjëse.
Përgjegjësia për saktësinë e të dhënave është e autoritetit publik që i ka



Interreg - IPA CBC 
Greece - Albania
nZCom



Interreg - IPA CBC 
Greece - Albania
nZCom



Interreg - IPA CBC 
Greece - Albania
nZCom



Interreg - IPA CBC 
Greece - Albania
nZCom





Heated / cooled areas of the building - thermal zones

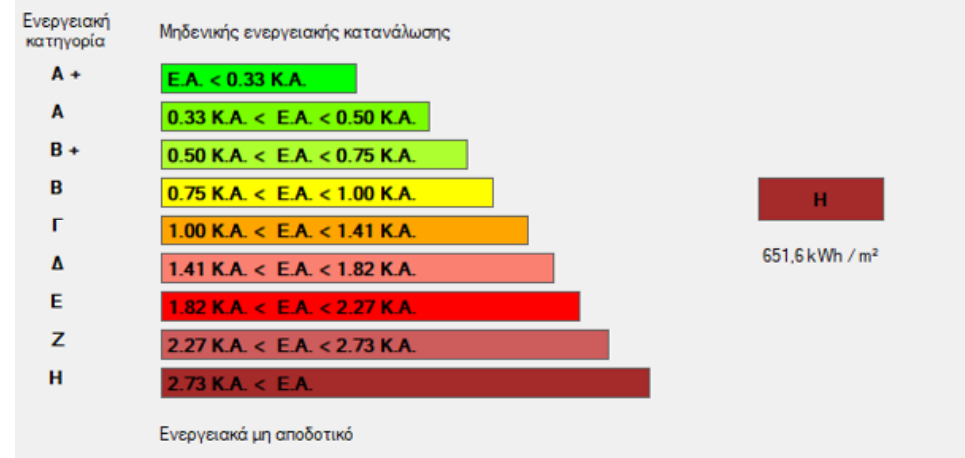
Total area (m ²)	910
Heated area (m ²)	910
Cooled area (m ²)	910
Total volume (m ³)	2.730
Heated volume (m ³)	2.730
Cooling volume (m ³)	2.730
Report of the building	2
Number of floors	2
Floor height (m)	3
Ground Floor height (m)	3
Number of thermal zone	1
Number of unheated areas	0
Number of solar spaces	0

Opaque structural elements

Opaque structural elements	Thermal transmittance coefficient
Vertical structural elements Masonry	2,3 W/m ² K
Vertical structural elements Reinforced Concrete	3,65 W/m ² K
Horizontal structural element floor	3,1 W/m ² K
Horizontal structural element roof	3,7 W/m ² K
Door	6,0 W/m ² K

Transparent structural elements

Transparent structural elements	heat transfer coefficient
Single-glazed wooden frames	5,0 W/m ² K
Single-glazed metal frames	6,0 W/m ² K



Energy saving measures

TECHNICAL INTERVENTION	GOAL
Thermal insulation of the building	Improvement of heat transfer coefficient of opaque structural elements
Frame replacement	Improvement of heat transfer coefficient of opaque structural elements
Replacement of light bulbs	Energy saving
Installation of fan-coil and geothermal heat pump	Improvement of thermal comfort, Energy saving
Installation of energy management system (BEMS)	Automatic control of operation of all EM facilities of the Cultural Center
Photovoltaic system installation	Energy production from renewable energy sources

